

PRODUKTINFORMATION



HÄMTFAX
08-580 941 14



FAX ON DEMAND
+46 8 580 941 14



INTERNET
<http://www.elfa.se>

TEKNISK INFORMATION 020-75 80 20 ORDERTEL 020-75 80 00 ORDERFAX 020-75 80 10

TECHNICAL INFORMATION +46 8 580 941 15 ORDERPHONE +46 8 580 941 01 ORDERFAX +46 8 580 941 11

— Vi reserverar oss mot fel samt förbehåller oss rätten till ändringar utan föregående meddelande —

ELFA artikelnr.
56-671-59 CWC100SMD linjetrafo (Y)

Antal sidor: 04

CRITCHLEY 100SMD

ISSUE C - 23/03/98

Critchley Components Limited

PO Box 246

Queens Drive Industrial Estate

Nottingham NG2 1NQ

United Kingdom

Tel: +44 (0) 115 986 1126

Fax: +44 (0) 115 986 0563

A compact encapsulated line isolating transformer, BABT, UL and BSi certified. Tested and approved in accordance with the requirements of EN41003: 1997, EN60950: 1992 (IEC950), EN60065: 1994 and AS/NZS 3260:1993 (BSi Certificate Nos. 7082 and 7456), UL1459, UL1950 and CAN/CSA 234-M90 (E171368 [M]).

ELECTRICAL SPECIFICATION

DC Resistance:
 Primary 148Ω ± 15%
 Secondary 148Ω ± 15%

Series O/C Inductance:
 measured @ 250mV
 200Hz >1.9H
 2000Hz >0.6H
 4000Hz >0.4H

Series O/C AC Resistance:
 measured @ 250mV
 200Hz >1KΩ
 2000Hz >7KΩ
 4000Hz >11KΩ

Leakage Inductance:
 200Hz - 4000Hz
 14.4mH max.

Harmonic Distortion:
 200Hz, -3dBm on primary,
 600Ω load on secondary.
 2f: -70dB max.
 3f: -47dB max.
 TDdBm: -43dBm max.

Insertion Loss:
 200Hz - 4000Hz
 (600Ω ref., 600Ω load)
 2.6dB max.

Frequency Response:
 200Hz - 4000Hz
 (600Ω ref., 600Ω load)
 ± 0.4dB max.

Return Loss:
 300Hz - 4000Hz
 >23dB (when using
 recommended circuit).

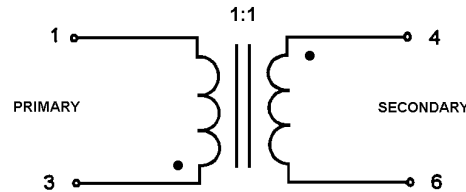
Max. DC current 0mA

ENVIRONMENTAL & SAFETY SPECIFICATION

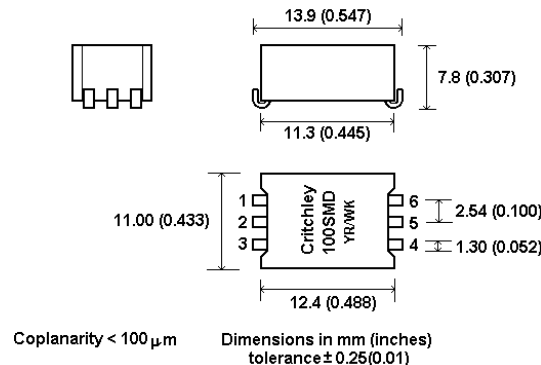
Voltage Breakdown: Tested according to
 EN60950 part 5.3.2.
 (test voltage: 3000 Volts).

Storage temperature: Tested to IEC 68-2-14:1984
 test procedure Nb.
 (temperature range -25°C to +85°C).

CIRCUIT SCHEMATIC



MECHANICAL SPECIFICATION

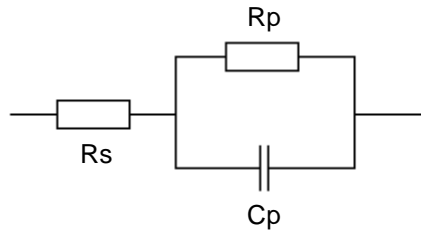


As this product is covered by a BABT Certificate of Recognition (CR0119) approvals time will be reduced.

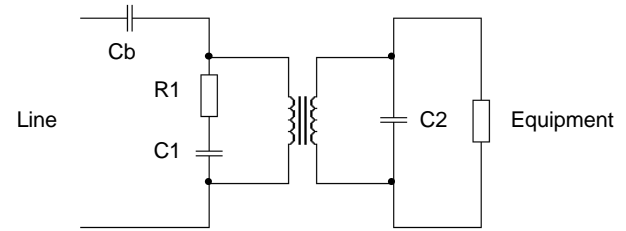


Application Circuits

Reference Impedance (ETS300 001):



Circuit description:



Country	Ref. Impedance Values			Recommended Circuit Values				
	R_s (Ω)	R_p (Ω)	C_p (nF)	C_b (μ F)	R_1 (Ω)	C_1 (nF)	C_2 (nF)	Equipment (Ω)
UK, New Zealand	370	620	310	6.8	*1070	100	55	*909
Germany, Switzerland	220	820	115	2.2	220	100	-	820
Australia	220	820	120	3.3	220	100	-	820
Sweden, Pan European (TBR 21)	270	750	150	3.3	220	100	-	750
Norway	120	820	110	3.3	220	100	10	820
Austria, Belgium, Canada, France, Finland, Hong Kong, Ireland, Italy, Japan, Netherlands, Portugal, Singapore, Taiwan, USA, Spain, Denmark	600 Ω			6.8	*1100	-	22	*1100

Notes: *E96 series resistor values.

Country reference networks are subject to change and interpretation. The above is intended as an initial reference and should you require more information for a network not shown please contact your local sales office. Software models are available on disk for all components.

CRITCHLEY 100SMD - SOLDERING AND PACKING INFORMATION

SOLDERING

The solderability of all batches of components is tested during manufacture.

The component is designed to provide high quality, consistent soldering by Infra Red Reflow process, however, the quality of the solder joints will vary depending on individual PCB layouts.

A representation of the suggested soldering profile is shown in figure 2.

PACKING

The transformer is packed in a tape and reel format to the internationally used EIA 481-A (IEC 286-3) standard.

The components are supplied on a 13-inch reel, which contains 300 components.

The essential dimensions of the tape and reel are shown in figure 3.

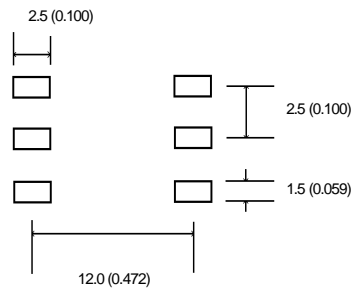


Figure 1

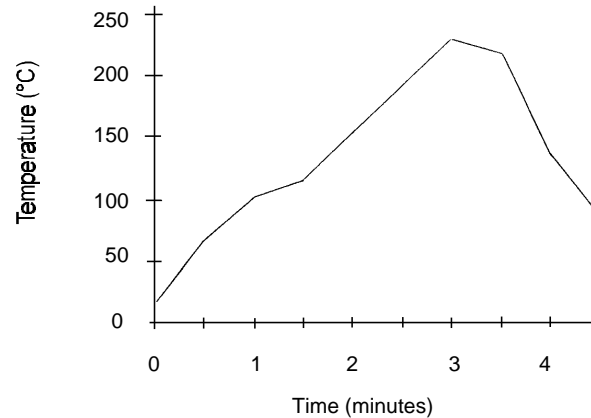


Figure 2

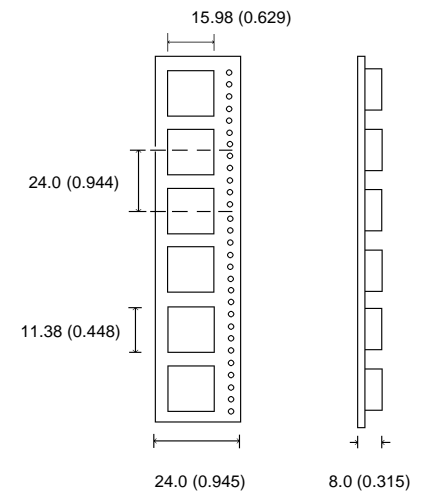


Figure 3

All dimensions in mm (inches)