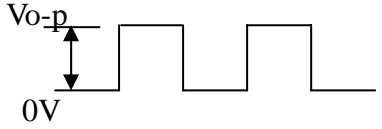


AD-7504-MA1-LF

FEATURES

Compact : rich sound magnetic buzzer.

Applications : Mobile phone , PDA , pager etc.

| Items | | Units | Specifications | Conditions |
|-------|----------------------|--------------------|-----------------|--|
| 01 | Rated Voltage | Vo-p | 3.6 |  |
| 02 | Operating Voltage | Vo-p | 3 ~ 4.5 | |
| 03 | Consumption Current | mA (max) | 100 | Standard State, Standard Drive Circuit. Rated Voltage, Distance at 10 cm free air 2500Hz, Square Wave 1 / 2 Duty |
| 04 | Sound Pressure Label | dB (min) | 87 | |
| 05 | Resonant Frequency | Hz | 2500 | |
| 06 | Coil Resistance | Ω | 10 ± 2 | At Basic State |
| 07 | Operating Temp. | $^{\circ}\text{C}$ | -30 ~ +70 | |
| 08 | Storage Temp. | $^{\circ}\text{C}$ | -40 ~ +80 | |
| 09 | Dimension | mm | 7.5 x 7.5 x 2.6 | See attached drawing. |
| 10 | Weight | Gram | 0.4 | |

Standard condition:

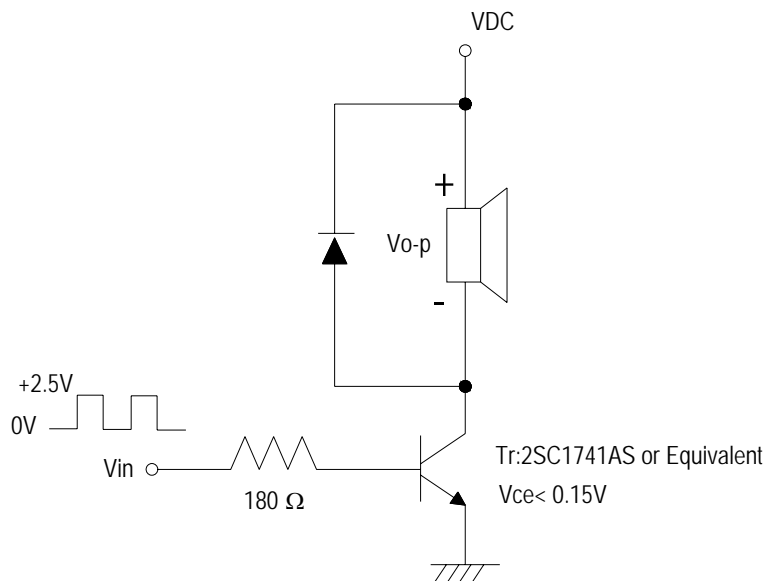
Ordinary Temp.(15~35 $^{\circ}\text{C}$), Humidity(25~85%RH), Air Pressure(860~1060HPa)

In case of doubtful judgment, the test is re-performed under basic state.

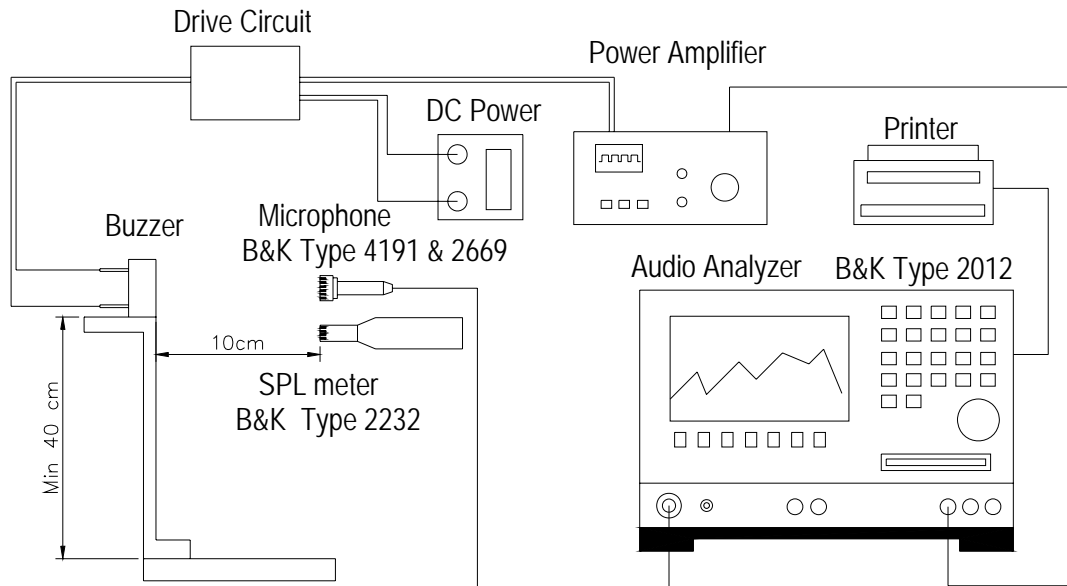
Basic State:

Temp.(20 \pm 2 $^{\circ}\text{C}$), Humidity(60~70%RH),Air Pressure(860~1060HPa).

Standard Drive Circuit:

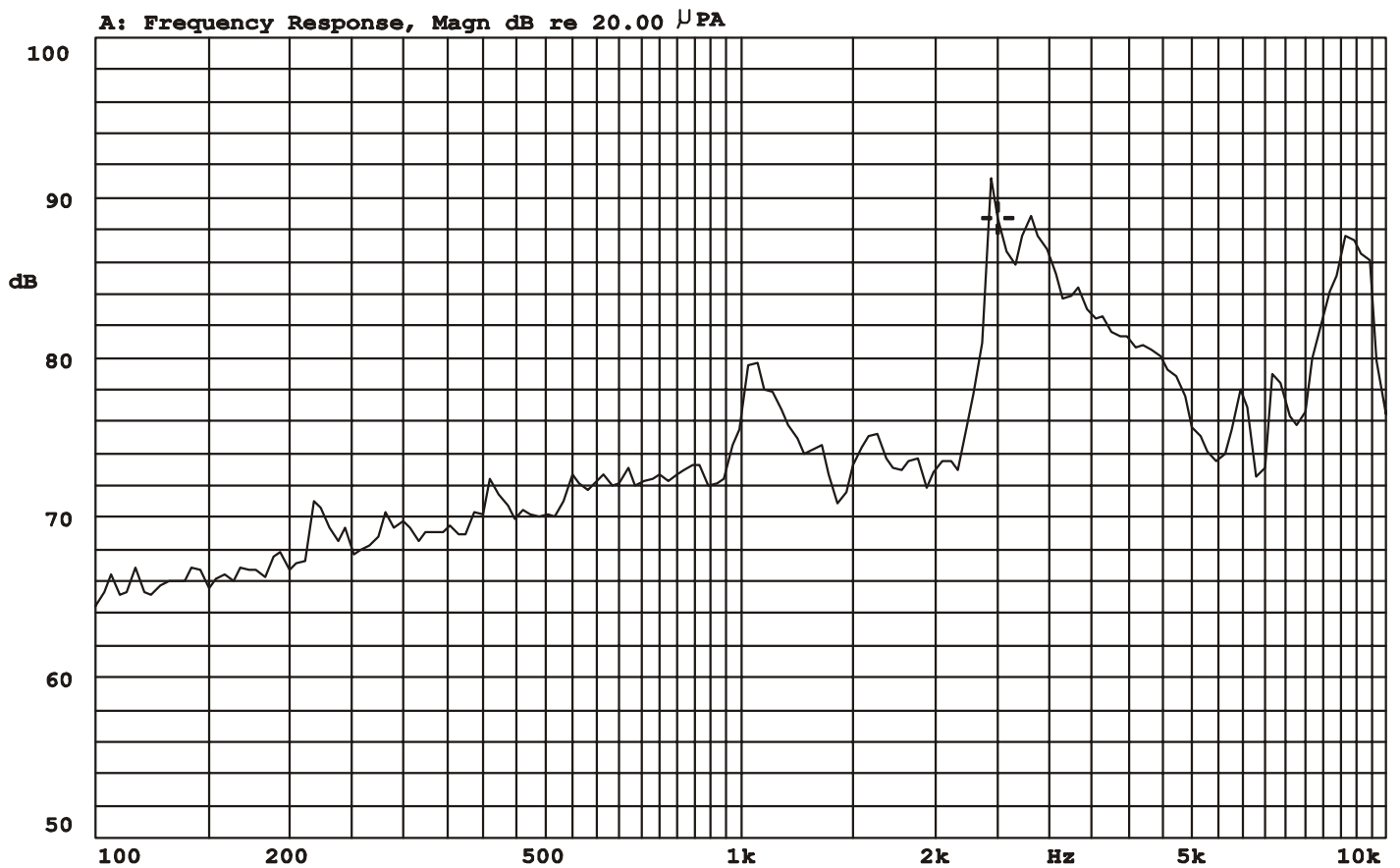


Standard Test Fixture



Frequency Response Curve

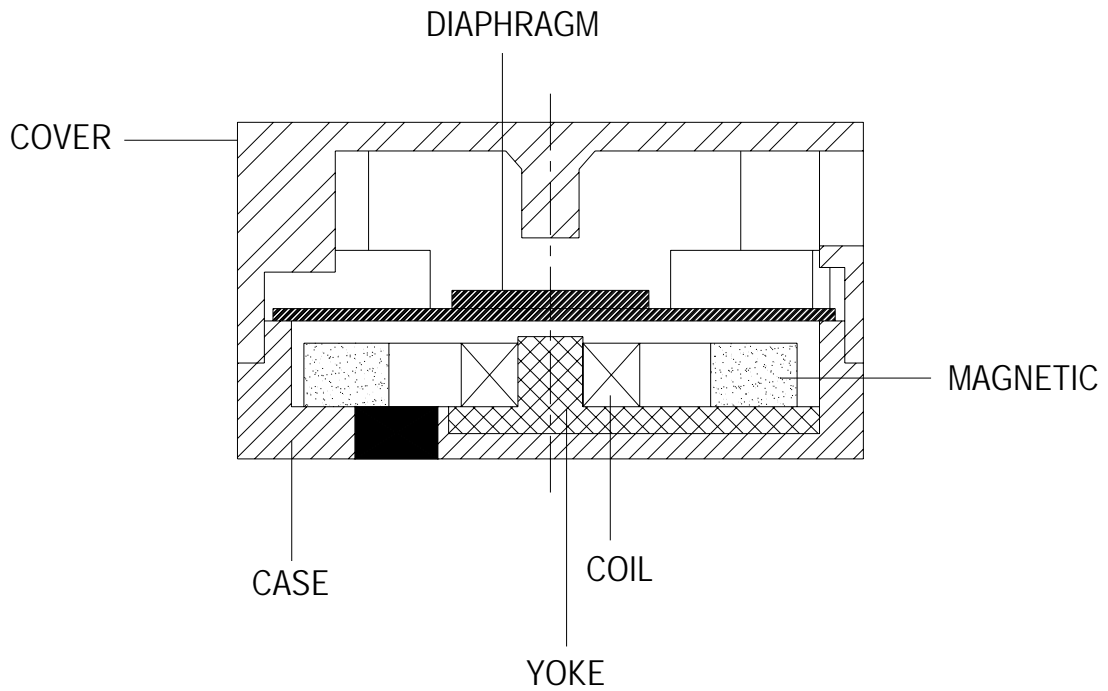
X:2.5119kHz Y:88.74dB ZA:Live Curve SSR T. RMS



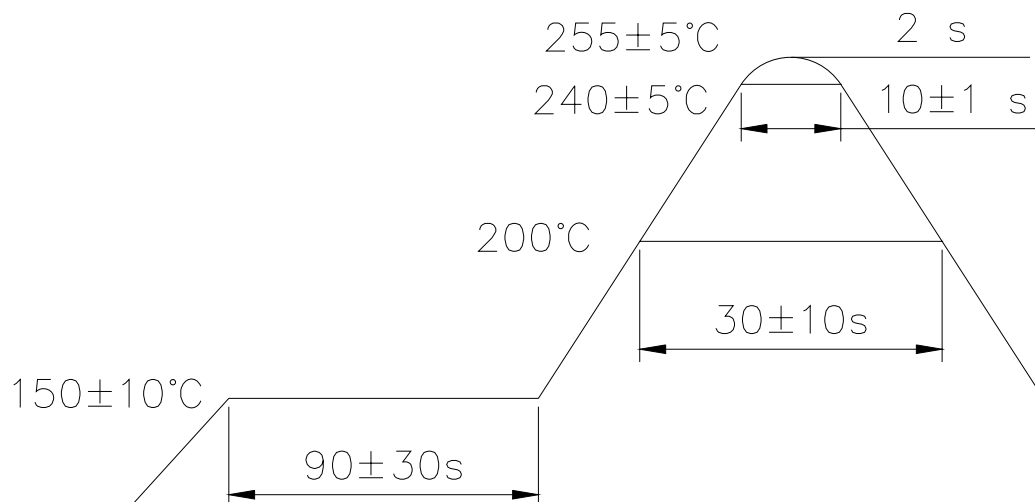
Mode: SSR

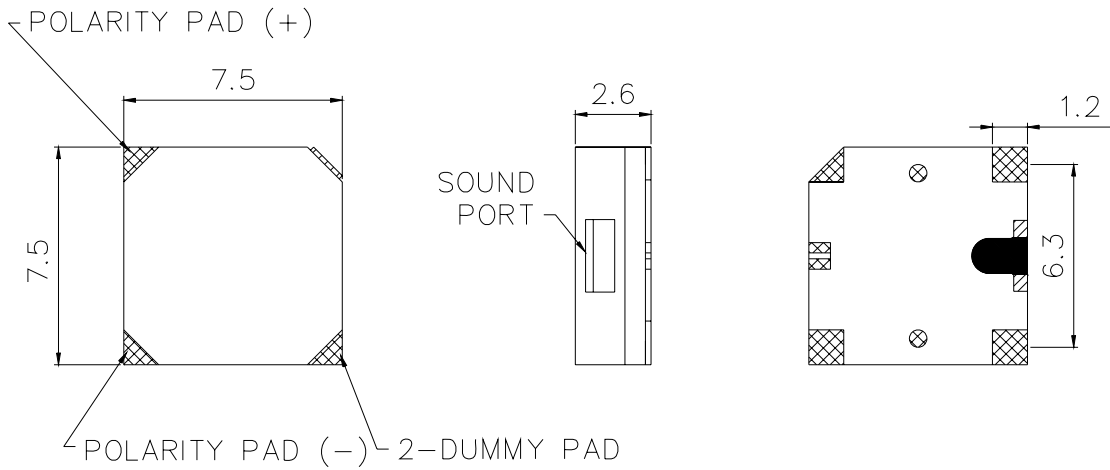


STRUCTURAL SPECIFICATION



Temperature profile for reflowable Buzzer .

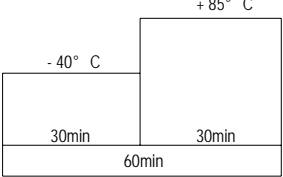





| | | | | |
|-------------------------------|---|--------------------------------|--|---------------|
| TITLE: SOUND TRANSDUCER (SMD) | | DRAWN: <i>Kitty</i> 2004/11/27 | SCALE: 4:1 | SHEET: 1 OF 1 |
| PART NO. AD-7504-MA1 | 1 | DESIGNED: R&D OF AAT | UNITS: mm | |
| DWG NO. DTE-1224 | | CHECKED: | TOLERANCE ± 0.2 | |
| REV | | APPROVAL: | UNLESS OTHERWISE SPECIFIED: ONE PLACE DECIMAL ± *** TWO PLACE DECIMAL ± *** THREE PLACE DECIMAL ± *** | |
| | | MATERIAL: LCP | | |

RELIABILITY TEST

AD-7504-BA1

| Item | | Test conditions | Evaluation standard |
|------|------------------------|---|---|
| 1 | High temp storage life | The part shall be capable of withstanding the storage temperature of +80°C for 240 hours. | <p>After the test, the part shall meet specifications without any degradation in appearance and performance except SPL. SPL shall be 77 or more</p> |
| 2 | Low temp storage life | The part shall be capable of withstanding the storage temperature of -40°C for 240 hours. | |
| 3 | Temp. cycle | <p>The part shall be subjected to 5 cycles one cycle shall consist of</p>  | |
| 4 | Temp./ Humidity cycle | <p>The part shall be subjected to 10cycle One cycle shall be 24 hours and consist of</p>  <p>A,B,D,E,G,H,J:90~98%RH C,F :80~98%RH</p> | |
| 5 | Operating life | Driving the sounder at 25±10°C for 240hrs. Input Rated Voltage and Frequency. | |
| 6 | High temp. | The part shall be subjected to 240 hours at +85°C Input Rated Voltage and Frequency. | |
| 7 | Low temp. | The part shall be subjected to 240 hours at -40°C Input Rated Voltage and Frequency. | |
| 8 | Vibration | 10~55Hz 1.5mm 55~150Hz 5G 10~200~10Hz 15minutes X,Y,Z,3directions 2h/direction. | |
| 9 | Fixed drop | The part mounted on an exclusive fixture(115g) shall be dropped 5 times from a height of 152cm onto concrete in each of 6 different axes(total 6 times) | |
| 10 | Free drop | The part shall be dropped freely from a height of 100cm onto concrete 1 time in 6 axes.(total 6 time) | |
| 11 | Solder ability | The part leads shall be immersed in molten solder maintained at 235±5°C for a period of 2.0±0.5 seconds | |
| 12 | Strength of Terminal | It shall be more than 10N in the vertical direction of terminal in the state that 4 terminals are soldered on PCB | |